

Food and Eating Habits of Animals

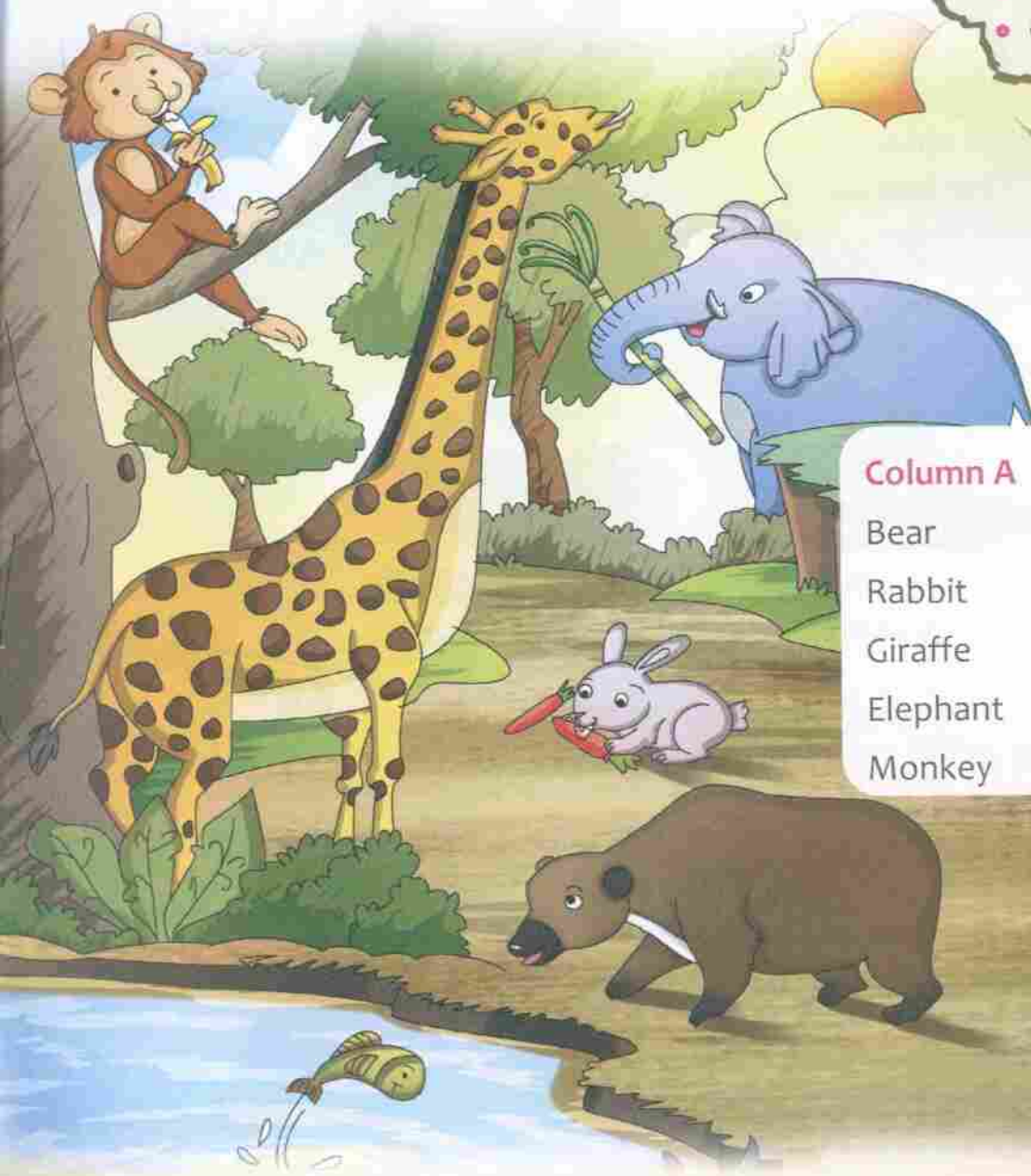
1



Look at the picture of a zoological park given below.
Match the animals to the food that they eat.

We Will Learn About

- All animals need food
- Feeding habits of animals
- Food chain
- How animals eat
- Care of domestic animals



Column A

Bear
Rabbit
Giraffe
Elephant
Monkey

Column B

Leaves
Banana
Carrot
Fish
Sugarcane

ALL ANIMALS NEED FOOD

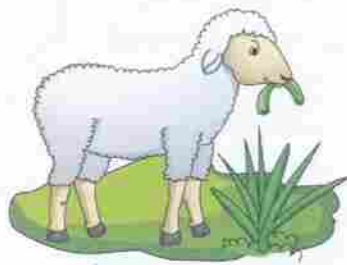
All the animals, whether they are big or small, need food to get energy. They use this energy to grow, to stay healthy and to do work.

FEEDING HABITS OF ANIMALS

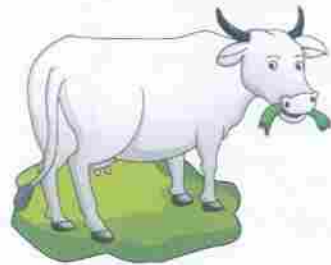
Herbivores

Different animals have different eating habits.

Some animals eat only plants. Sheep, cows, horses and buffaloes eat grass. Rabbits eat carrots. Monkeys love to eat bananas. Animals that eat only plants or plant parts are called **plant-eating animals** or **herbivores**.



Sheep



Cow

Herbivores



Horse

Carnivores

Some animals eat only the flesh of other animals. They are called **flesh-eating animals** or **carnivores**. Lions, tigers, leopards and fox are carnivores.



Lion



Leopard

Carnivores



Fox

Omnivores

Some animals eat both plants and the flesh of other animals. They are called **omnivores**. Bears, crows and human beings are omnivores.



Bear



Crow

Omnivores



Human Being



Know More

Prey is an animal killed by another animal for food.



Know More

Cows have no upper front teeth instead they have a thick pad of skin in place of teeth.

Food for Domestic Animals

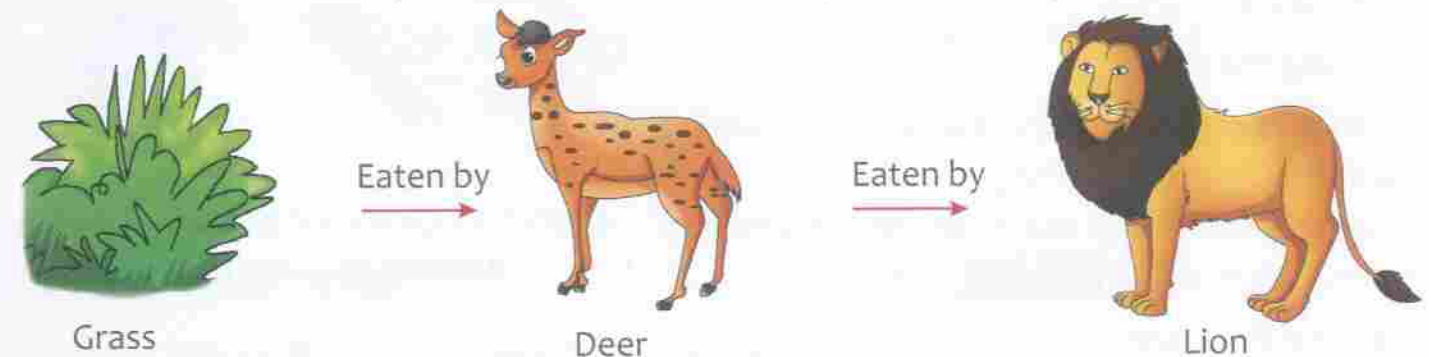
Domestic animals eat food provided by us. So it is our duty to feed them well to keep them healthy and **energetic**. We should give them fresh food and clean water. Milk-giving animals like cows and buffaloes should be fed with green grass. Animals that carry our load should be fed with fodder and oat as these foods provide them with energy.



Feeding a horse with grass

FOOD CHAIN

All animals depend directly or indirectly on plants for their food. Herbivores depend on plants directly for their food. Carnivores eat herbivores. If there are no plants, there would be no herbivores and carnivores will not get their food. So carnivores and even omnivores also depend on plants for food. So in this way, a sequence or a chain is formed. This chain is called **food chain**. For example, grass is eaten by a deer and the deer is eaten by a lion. **A food chain always starts with plants.**



Food chain

Oral Test

Correct the following statements.

1. Animals need money to get energy.
2. Rabbits eat bananas.
3. A fox is an omnivore.
4. Animals that carry our load should be fed with milk.
5. A food chain always ends with plants.

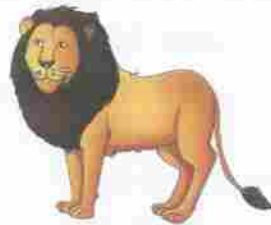


Energetic: Active; full of energy

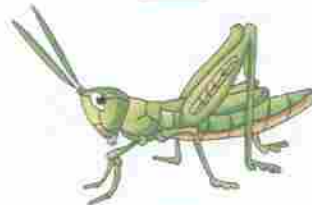
Activity

Number the pictures in the correct order to make a food chain.

1.



2.



HOW ANIMALS EAT?

How an animal eats depends on the type of food it eats.

Gnawing the Food

Animals like squirrels and rabbits eat parts of plant that are hard. They have a set of very long and flat front teeth to bite fruits and seeds. This is called **gnawing** of food.



Rabbit

Squirrel

Animals gnawing the food

Chewing the Food

Animals like cows and buffaloes have a special way of eating food. They first swallow their food without fully chewing it and fill their stomach. This is called **cud**. Later they bring it back into their mouth and chew it properly. This is called **chewing** the food. These animals have grinding teeth as well as teeth at the front for biting.



A cow chewing food

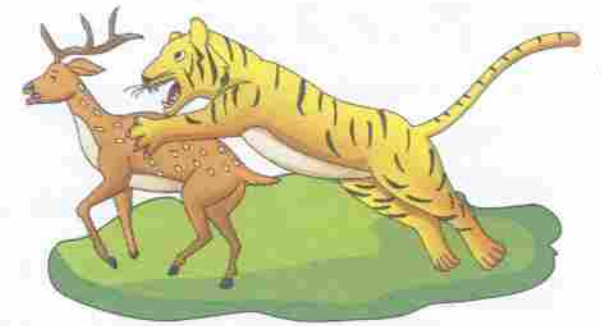
Gnawing: Biting something repeatedly

Chewing: Biting and crushing the food with the teeth to make it easier to swallow

Cud: Half chewed and swallowed food.

Tearing and Cutting the Food

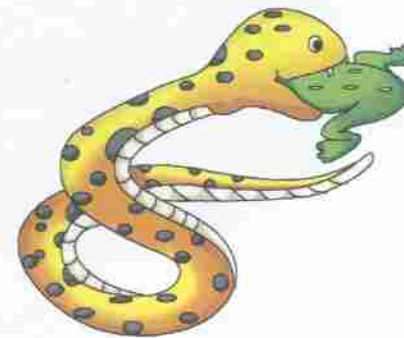
Carnivores such as lions and tigers have sharp and curved front teeth that help them to tear the flesh. They have strong jaws and their back teeth are broad and flat. The animals chew flesh and bones with their grinding teeth.



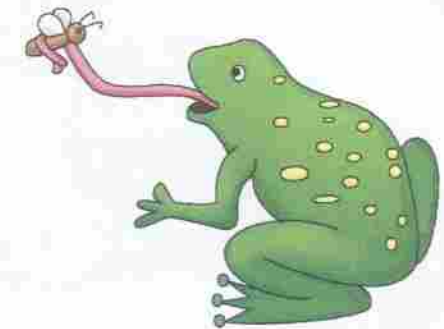
A tiger tears the flesh

Swallowing the Food

Some animals like snakes do not have chewing or biting teeth at all. They swallow the whole food.



A snake swallowing its food



A frog catching an insect

A frog eats insects. It has a long, sticky and elastic tongue which it uses to catch its prey. When it spots an insect, it sticks out its tongue and catches the insect. Then it rolls the tongue back into its mouth.

Lapping Milk or Water

Animals like cats and dogs **lap** milk or water with their tongue.



Cat



Dog

Animals lapping milk and water



Lap: Drink liquid with quick movements of the tongue

Feeding Habits of Some Animals

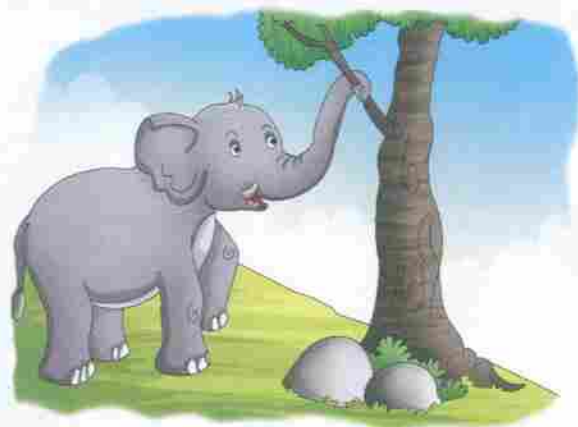
- Insects like bees and butterflies have a hollow tube in their mouth. This tube helps them to suck their food.
- Earthworms swallow soil which has parts of dead plants and animals in it.
- Leeches and mosquitoes suck blood from the bodies of other animals.
- Elephants use their trunks to drink water. The trunk takes the water and shoots into the mouth. Besides, elephant uses its trunk to break off branches and leaves and push them into its mouth.



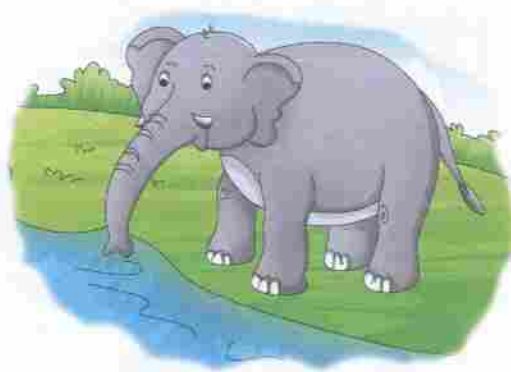
A butterfly



A bee



The elephant breaks off leaves with its trunk.



The elephant uses its trunk to drink water.

Oral Test

Choose the correct options.

1. Animals like squirrels and rabbits *swallow* / *gnaw* the food.
2. *Herbivores* / *Carnivores* have sharp front teeth that help them to tear their food.
3. *Lions* / *Snakes* swallow their whole food.
4. *Butterflies* / *Cats* have a hollow tube that helps them to suck their food.



Project Time

1. Collect pictures of at least fifteen animals and birds from old books, newspapers, magazines, etc. Categorize them according to their eating habits and paste them in your scrapbook.
2. Visit a zoo and collect information about the eating habits of animals such as bear, deer, birds and chimpanzees. Discuss in class.

CARE OF DOMESTIC ANIMALS

All animals need care and protection. If we are good with our domestic animals, they will serve us well. We should give them food and water in clean vessels. We should clean their shelters regularly. Sick animals must be treated in time. We should always be kind to animals.



Care of domestic animals



Talk to the children about the eating habits of various animals and how each of them have mouth parts suited to the kind of food they eat. Explain them about the food chain by giving various examples.

LET'S REVISE

- Animals need food to grow, work and stay healthy.
- Different animals have different eating habits.
- Herbivores eat only plant food, carnivores eat only the flesh of other animals and omnivores eat both plants and the flesh of other animals.
- All animals whether herbivores or carnivores depend on plants directly or indirectly.
- Different animals eat their food in different ways.
- Some animals gnaw their food, some tear and cut, some swallow their whole food while some others lap or suck their food.
- We must take care of our domestic animals.

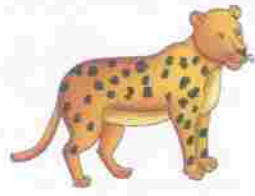


EXERCISES

A. Tick (✓) the correct answer.

1. Why do animals need food?
 - a. To Grow
 - b. To Get Energy
 - c. Both (a) and (b)
2. Which of these is an omnivore?
 - a. Bear
 - b. Cow
 - c. Dog
3. Which of the following animal gnaws its food?
 - a. Rabbit
 - b. Snake
 - c. Bear
4. Which of the following animal sucks its food?
 - a. Snake
 - b. Butterfly
 - c. Goat

B. Categorize the following animals as herbivores, carnivores or omnivores.



C. Write T for true statement and F for false statement.

- Some animals do not need food.
- Herbivores eat only the flesh of other animals.
- A frog sucks its food.
- A tiger tears and chews its food.
- A snake swallows its whole food.

D. Give two examples each of animals that

- eat only plants or plant parts
- eat both plants and animal flesh
- chew the cud
- lap milk or water

E. Fill in the blanks.

- Animals need food to get _____.
- Monkeys love to eat _____.
- Bears, crows and human beings are _____.
- _____ and _____ suck blood from the bodies of other animals.
- Grass is eaten by a deer and _____ is eaten by a _____.

F. Answer the following questions.

- Name the types of animals based on the food they eat.
- How are omnivores different from herbivores?
- What do you understand by a food chain?
- How does a frog eat its food?

- What kind of food should be given to the animals that give us milk?
- How do cows and buffaloes eat food?
- How do elephants use their trunks?

G. Match the following :

- | Column A | Column B |
|------------|--------------|
| 1. Cow | a. Gnaw |
| 2. Bear | b. Carnivore |
| 3. Fox | c. Omnivore |
| 4. Animals | d. Herbivore |

HOTS

- H. When we bite an apple and then chew it, do we use the same teeth?**
(Hint: Observe which part of mouth we use in each case.)
- I. A dog has sharp and pointed front teeth. Why?**
- J. A mosquito does not have teeth. Then how does it 'bite' us?**



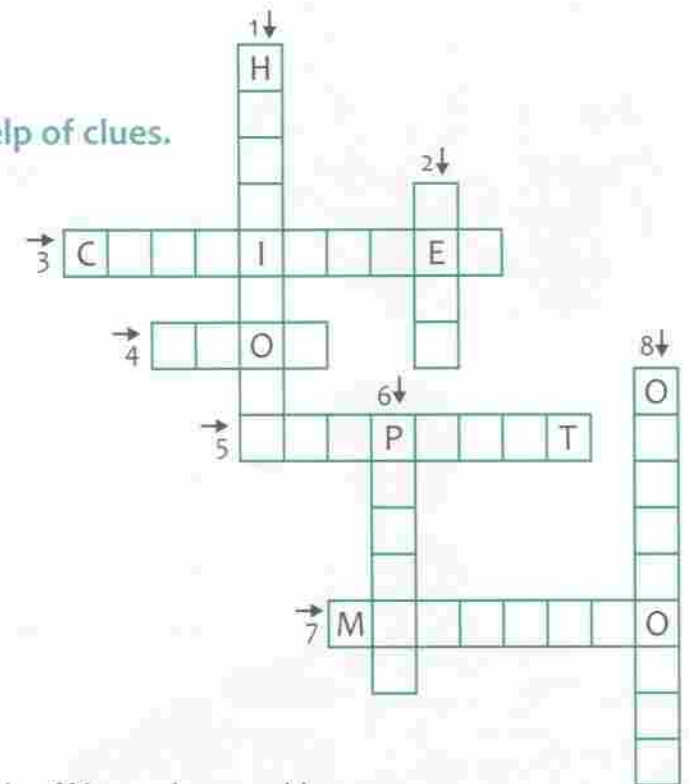
K. Complete the crossword puzzle with the help of clues.

Down

- Plant-eating animals are also known as this
- A wild omnivore
- A green bird with a red beak that eats chillies
- Animals which eat both plants and the flesh of other animals

Across

- Flesh-eating animals
- An animal with a long sticky tongue
- A big animal which uses its trunk to break off branches and leaves
- An insect that sucks human blood





LIFE SKILL

L. How should we take care of our pets and other animals? Put a tick (✓) or a cross (✗).

1. Feed your pet well.
2. Keep your pet's shelter clean.
3. Keep birds in cage.
4. Throw stones at a goat to make it run.
5. Take sick animals to a vet.
6. Make a lot of noise around animals.



Visit the Web

You will be excited to know how Koalas and Chimpanzees eat and egg eating snakes not choke.

<https://www.animalfunfacts.net/knowledge/senses-and-abilities/307-animals-with-unusual-eating-habits.html>